

'Cello

Galileo's Starry Messenger

words by George Keithley

Music by Leslie Kleen

MusicFromRiverside

Copyright © Leslie Kleen 2013

Instrumental Ensemble: String Quartet, Woodwind Quartet (flute, oboe, Bb clarinet, bassoon) and piano.

Musical pieces:

1. *Introduction*
2. *They Cherish Ancient Ways*
3. *Interlude 1*
4. *Must I Be Blind?*
5. *The Closed Globe Explodes*
6. *The Moon is Late*
7. *Interlude 2*
8. *Interlude 3*
9. *Interlude 4*
10. *He Kneels Before Their Slipped Feet*
11. *Interlude 5*
12. *Hope Alone Heals*
13. *Though the Age Died*

NOTE: The places where the orchestra is to stop and wait until spoken lines are completed are marked with a square fermata:



and then a double bar with a rehearsal letter indicates where they continue.

Introduction

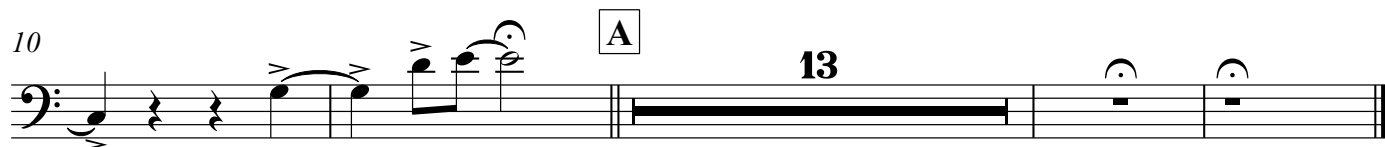
1

 $\text{♩} = 86$ 

6



10



They Cherish Ancient Ways

Solo - Galileo

$\text{♩} = 90$

mp

6

12

17

10

Interlude 1

Venice

♩=120

5 3

9 4

f

18 4

mp

28 *ritard.*

p

Must I Be Blind?

Galileo and chorus

♩=88

pizz.

arco

6

12

mf

mp

p

mp

mf

18

Slower

♩ = 72

p

23

7

♩ = 74

5 ♩ = 88

14

23

31

38 **4** **5** Presto ♩ = 130

The musical score for the bass line of 'The Rose Tree' is written in bass clef with a key signature of one flat (B-flat). The tempo is marked 'Allegretto' and the time signature is 3/4. The score consists of 12 measures. The first measure is a whole rest. The second measure contains a single eighth note B-flat. The third measure is a double bar line. The fourth measure is a whole rest. The fifth measure contains a single eighth note B-flat. The sixth measure is a double bar line. The seventh measure is a whole rest. The eighth measure contains a single eighth note B-flat. The ninth measure is a double bar line. The tenth measure contains a single eighth note B-flat. The eleventh measure contains a single eighth note B-flat. The twelfth measure contains a single eighth note B-flat. The piece ends with a double bar line.

The Moon is Late

Galileo

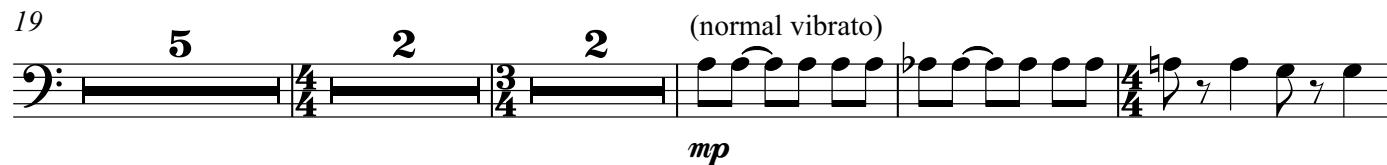
♩ = 84



10



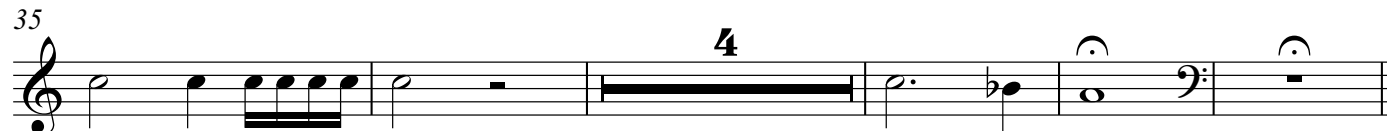
19



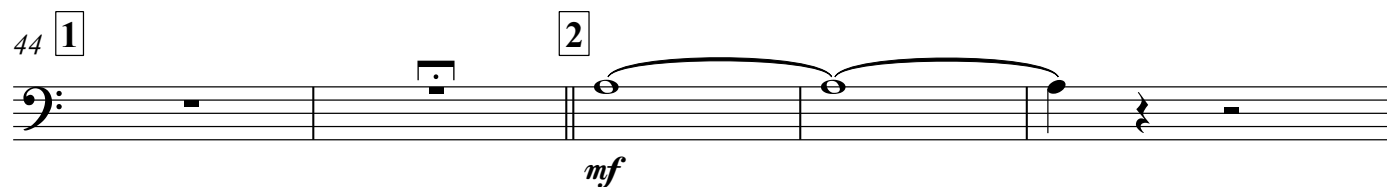
31



35



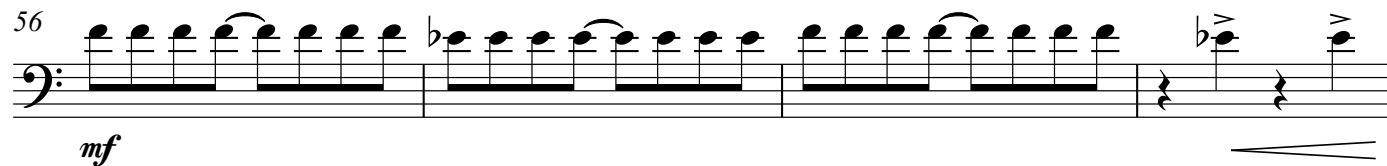
44 [1]



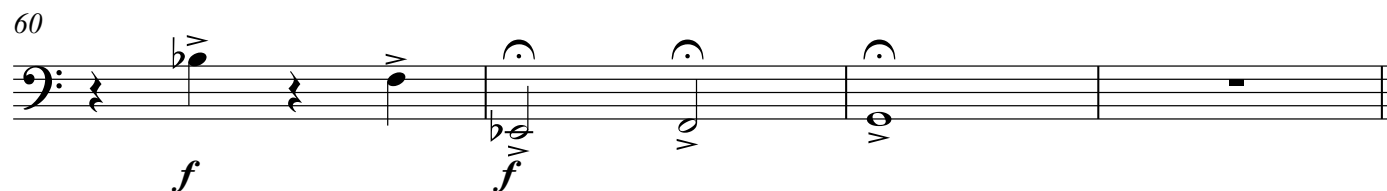
49 [3]



56

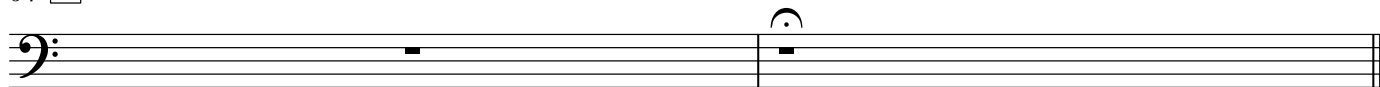


60



2

Violoncello

64 4

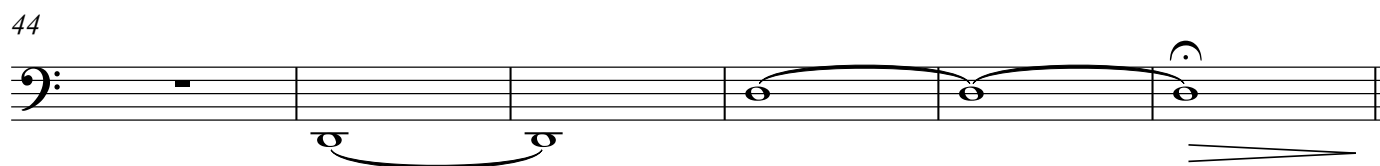
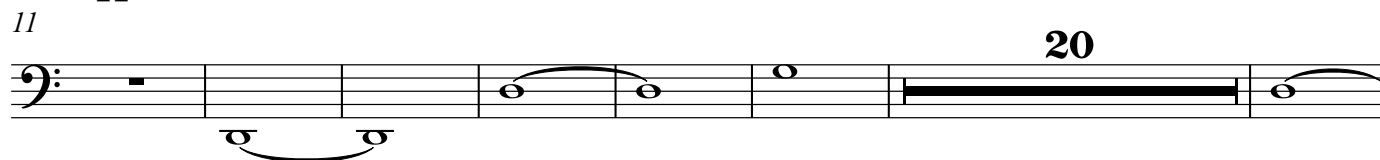
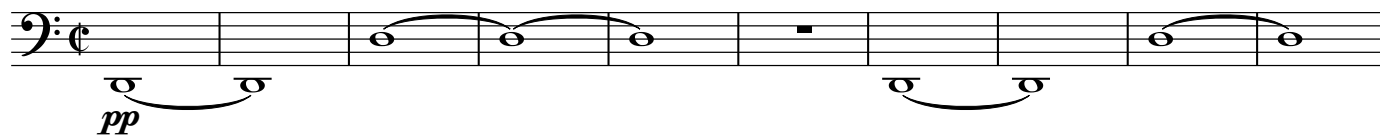
Interlude 2

The Black Death

$\text{♩} = 80$

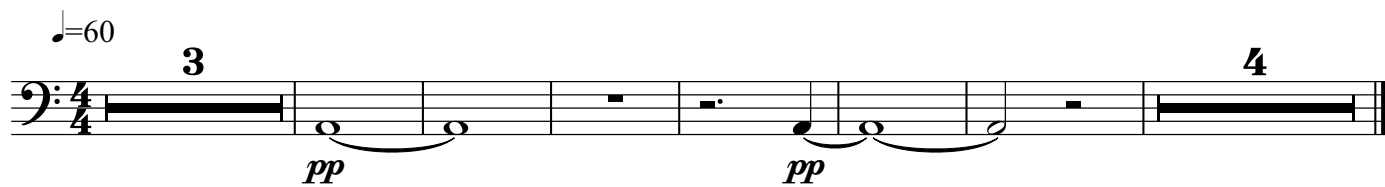


Violoncello

Interlude 3
The Cellar Chamber $\text{♩} = 70$ 

Interlude 4

The Inquisition Chapel



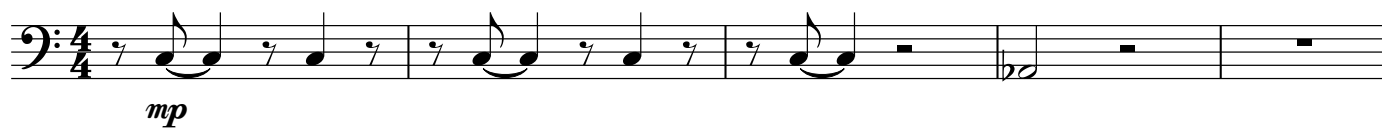
Violoncello He Kneels Before Their Slipped Feet
narrator and chorus

Musical score for "The Rose Tree" in 4/4 time. The tempo is marked as ♩ = 63. The key signature has one flat (B-flat). The score is divided into two systems. The first system consists of two staves. The top staff is a bass clef staff with a key signature of one flat and a 4/4 time signature. It contains a whole note chord (F2, C3, F3) followed by a whole note chord (F2, C3, F3) and a whole note chord (F2, C3, F3). The bottom staff is a bass clef staff with a key signature of one flat and a 4/4 time signature. It contains a whole note chord (F2, C3, F3) followed by a whole note chord (F2, C3, F3) and a whole note chord (F2, C3, F3). The second system consists of two staves. The top staff is a bass clef staff with a key signature of one flat and a 4/4 time signature. It contains a whole note chord (F2, C3, F3) followed by a whole note chord (F2, C3, F3) and a whole note chord (F2, C3, F3). The bottom staff is a bass clef staff with a key signature of one flat and a 4/4 time signature. It contains a whole note chord (F2, C3, F3) followed by a whole note chord (F2, C3, F3) and a whole note chord (F2, C3, F3).

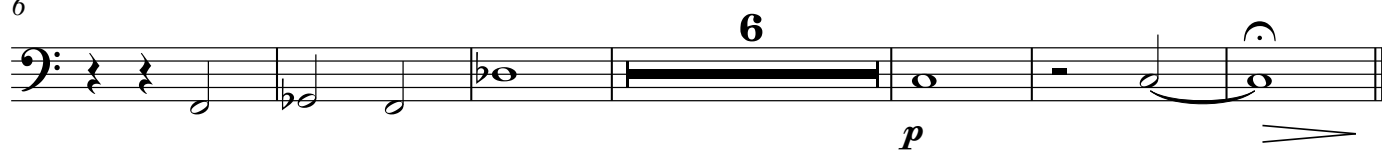
Interlude 5

House Arrest

♩ = 86



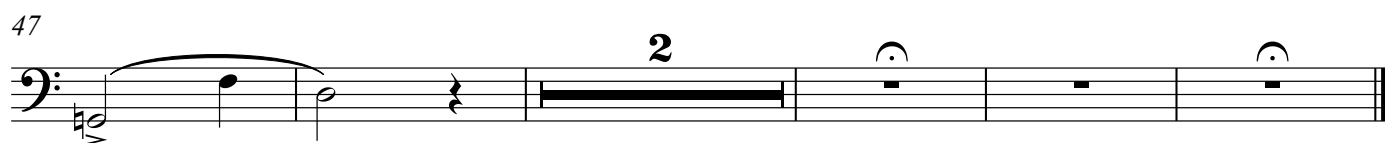
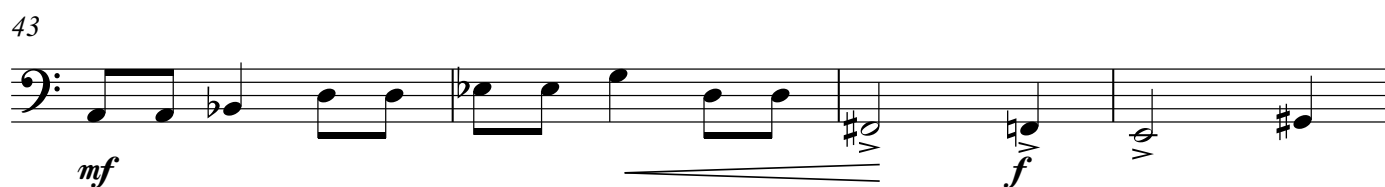
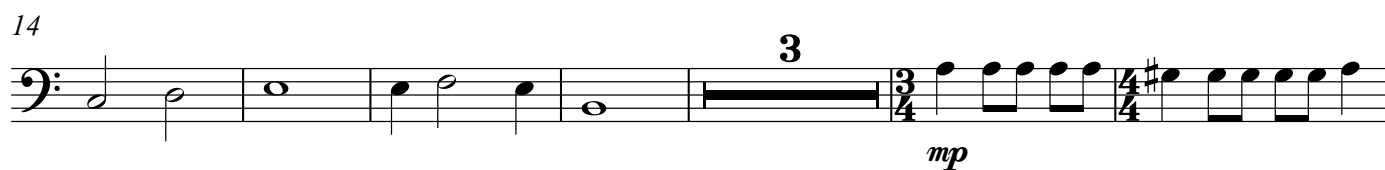
6

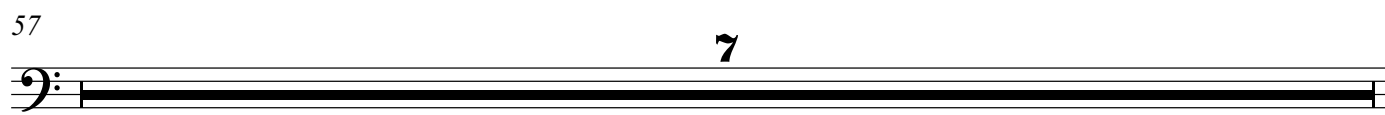
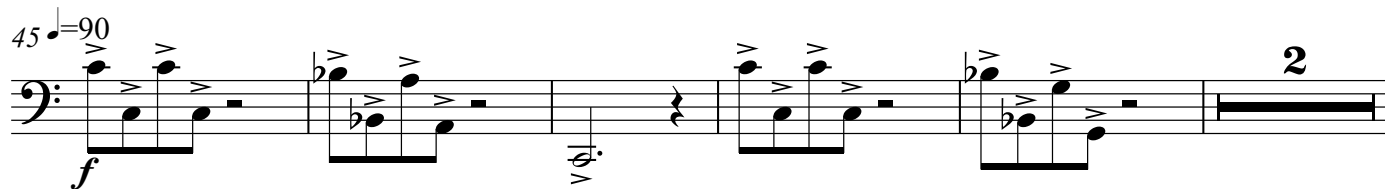
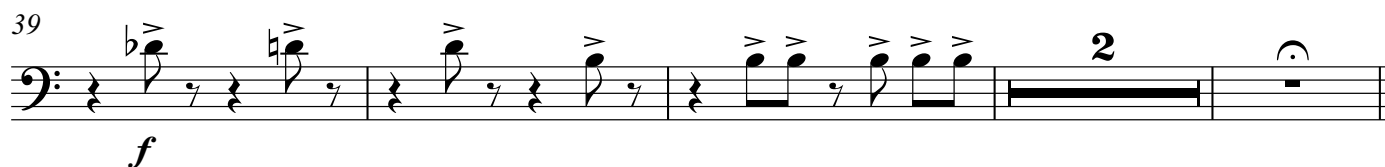
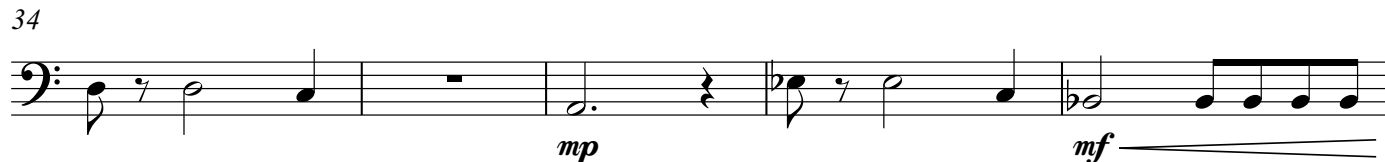
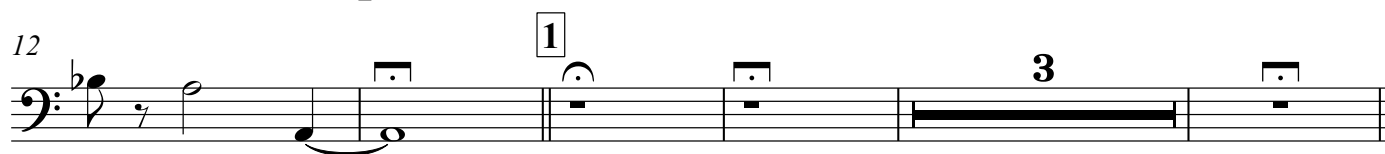
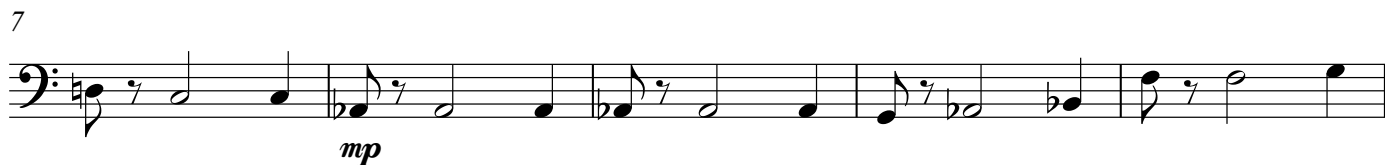


Violoncello

Hope Alone Heals
Galileo

♩=90



Though The Age Died
narrator and chorus $\text{♩} = 84$ 

2

Violoncello

64

♩=70

